



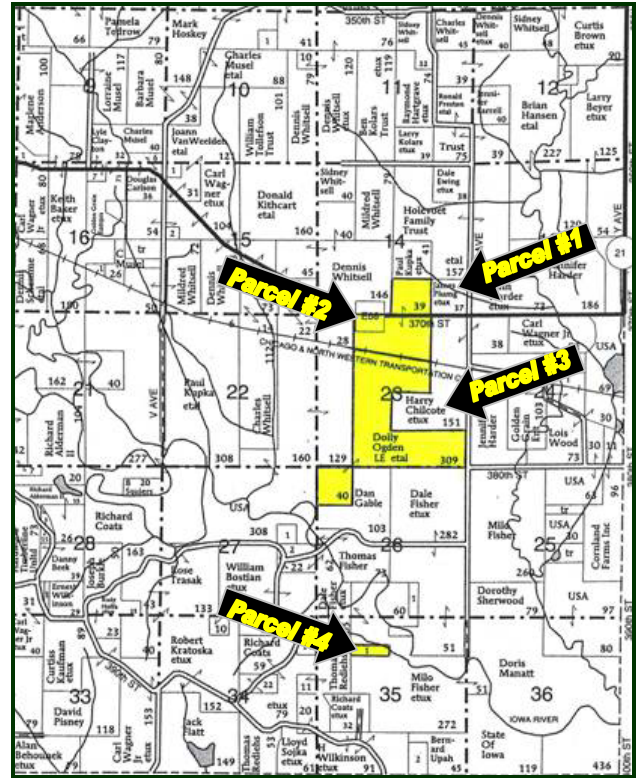
**We are Pleased to
Present for Sale by Auction
Parcel #4 - 10 Acres
Tama County, Iowa**

- LEGAL DESCRIPTION:** S $\frac{1}{2}$ S $\frac{1}{2}$ NE $\frac{1}{4}$ NW $\frac{1}{4}$ of Section 35, Township 82 North, Range 13 West of the 5th P.M., Tama County, Iowa.
- DATE OF CLOSING:** September 25, 2008.
- POSSESSION:** At closing.
- TAXES:** 2007-2008, payable 2008-2009 - \$28.00 - net - \$2.80 per taxable acre. There are 10 taxable acres.
- METHOD OF SALE:** This property will be offered as one parcel containing 10 acres. The bids will be dollars per acre and will be multiplied by 10 acres to determine the total sales price.
- ACCESS:** This farm currently does not have a public road access. Access to this property must be gained through a neighbor by permission only.
- BROKER'S COMMENTS:** This is a unique opportunity to purchase a 10-acre timber tract on the Iowa River bottom!

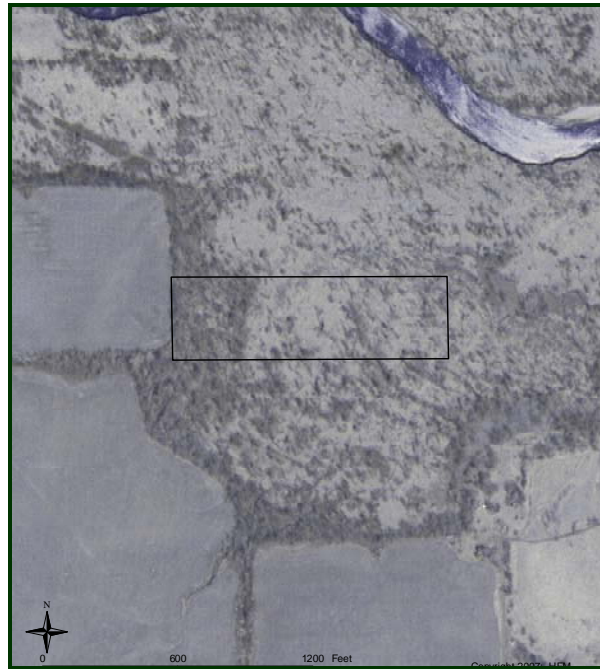
Aerial Map



Plat Map



Permission for reproduction of map granted by Farm & Home Publishers



WE ARE PLEASED TO OFFER THESE SERVICES

APPRAISALS ✦ REAL ESTATE SALES ✦ FARM MANAGEMENT

FOR MORE INFORMATION EMAIL: [MV REAL ESTATE](mailto:info@mvrealestate.com)

102 PALISADES ROAD ✦ MT. VERNON IA ✦ 52314 ✦ PHONE: 319-895-8858 ✦ WWW.HFMGT.COM

The information gathered for this brochure is from sources deemed reliable, but cannot be guaranteed by Hertz Real Estate Services or its staff. All acres are considered more or less.